



1. Greenagh (Le. 40), from South.



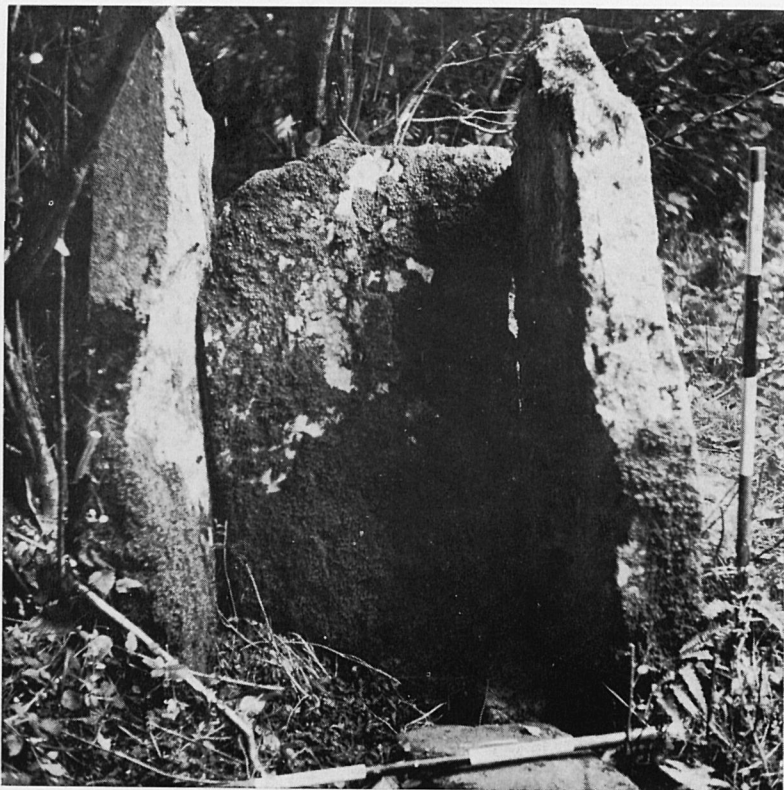
2. Greenagh (Le. 41), from North.



3. Annaghmore (Le. 42), from North-West.



4. Lickbla (We. 1), from North.



1. Melkagh (Lf. 1). Entrance to main chamber, from South.



2. Cleenrah (Lf. 2), from West.



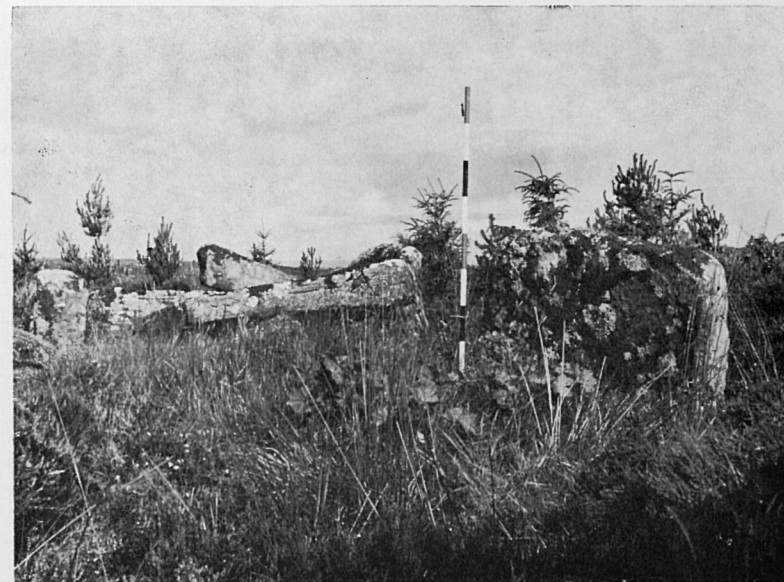
3. Aghnacliff (Lf. 3), from South.



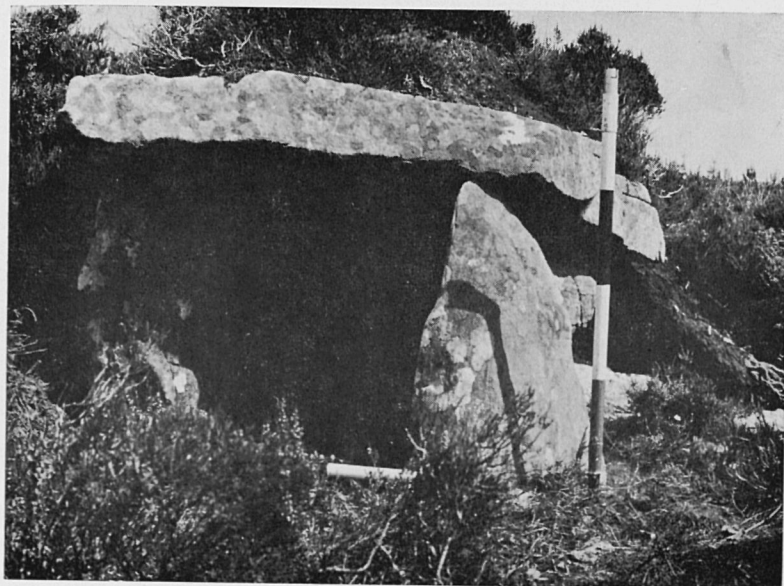
4. Aghnacliff (Lf. 3), from West.



1. Gortaquill (Cv. 1), Segmenting jamb at left, sidestone at right.



2. Burren (Cv. 3), from West.



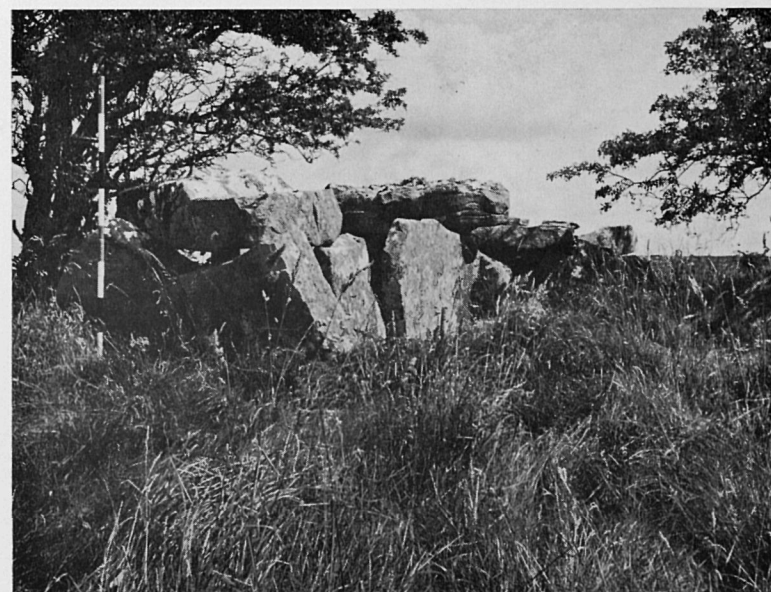
3. Burren (Cv. 4), from West.



4. Burren (Cv. 6), from South-East.



1. Burren (Cv. 5), Entrance to gallery, from West.



2. Burren (Cv. 5), from South.



3. Legalough (Cv. 7), from West. Pole stands beside northern jamb.



4. Legalough (Cv. 8), from West. Façade stone at right of picture.



1. Moneygashel (Cv. 9), from North. Pole stands immediately West of Western portal.



2. Mullaghboy (Cv. 10), from North-West. Pole lies between entrance jambs.



3. Garvagh (Cv. 11), from South-West, Horizontal pole at backstone.



4. Aghnacally (Cv. 13), from South-West.



1. Cashel and Carrickbrannan (Cv. 12). Back chamber of Northern gallery, from North.



2. Cashel and Carrickbrannan (Cv. 12). Entrance to Northern gallery from South.



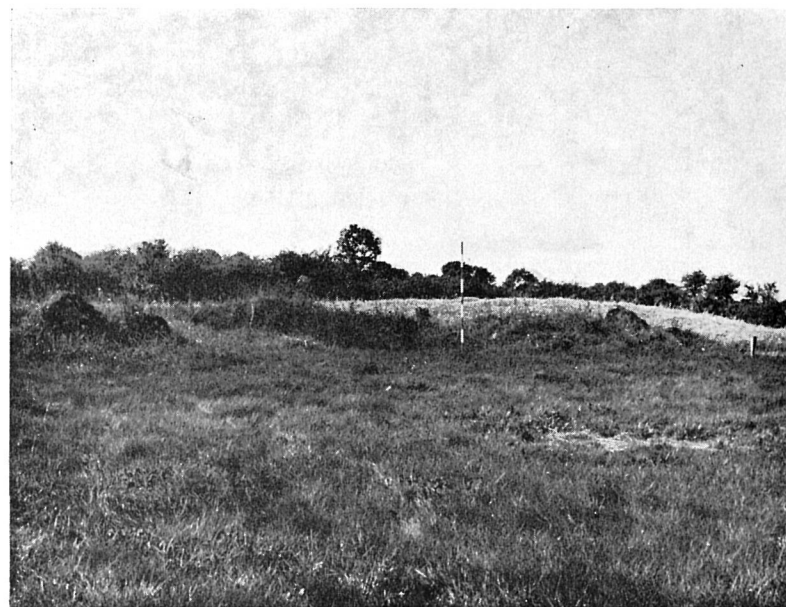
3. Cashel and Carrickbrannan (Cv. 12). Southern gallery, from North.



4. Aughrim (Cv. 14). Entrance to gallery, from South-West.



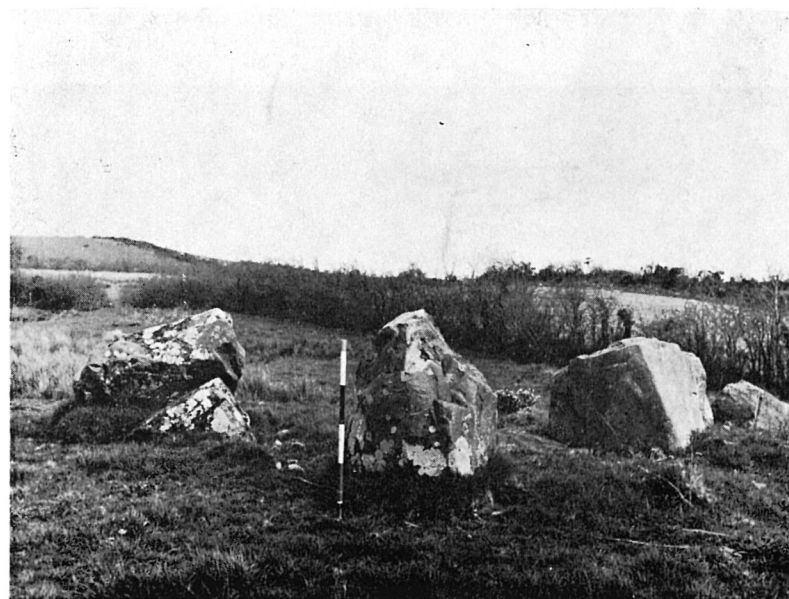
1. Kilnavert (Cv. 15), from South-West.



2. Killymoriarty (Cv. 16), from North.



3. Drummany (Cv. 18), from East.



4. Cohaw (Cv. 20), from West.



1. Drumavrack (Cv. 19). Entrance to South-Eastern gallery, from South.



2. Drumavrack (Cv. 19). South-Eastern gallery, from North-West.



3. Drumavrack (Cv. 19), from South-East. Middle and back chambers of South-Eastern gallery in foreground; North-Western gallery beyond.



4. Drumavrack (Cv. 19). Jambs between middle and back chambers of North-Western gallery, from South-East.



1. Mayo (Cv. 21), from West.



2. Mayo (Cv. 21), from South.



3. Cohaw (Cv. 22), looking South. Jambs between front and second chambers at Northern end of structure in foreground.



4. Cohaw (Cv. 22), looking North. Pole stands at entrance to Northern chambers.



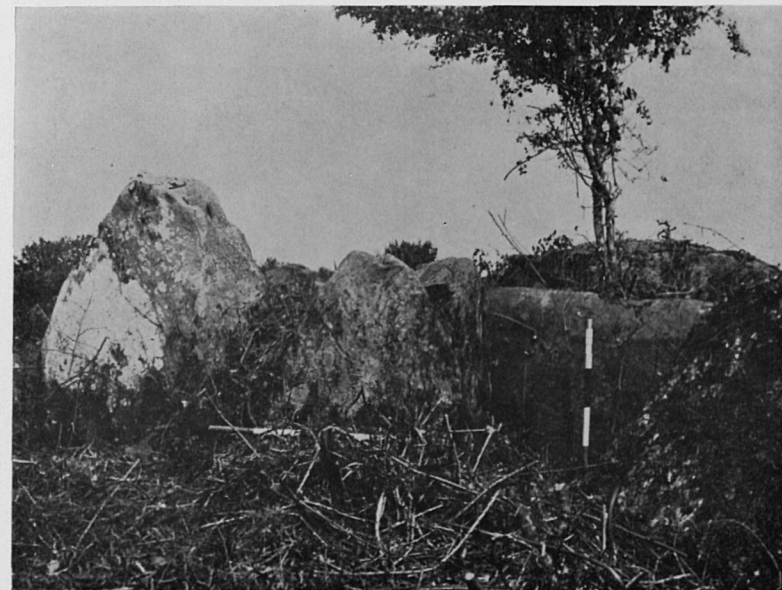
1. Aghagashlan (Cv. 23). East end of monument from West.
Vertical pole at backstone; horizontal pole at
entrance to chambers.



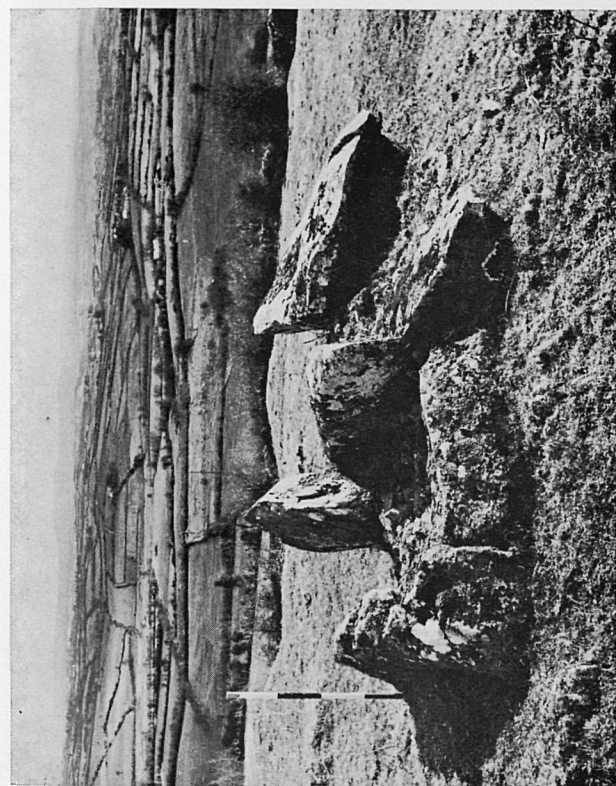
2. Aghagashlan (Cv. 23). Western court from South-West.
Pole stands at entrance to chambers.



3. Knockatudur (Cv. 24), from South-East.



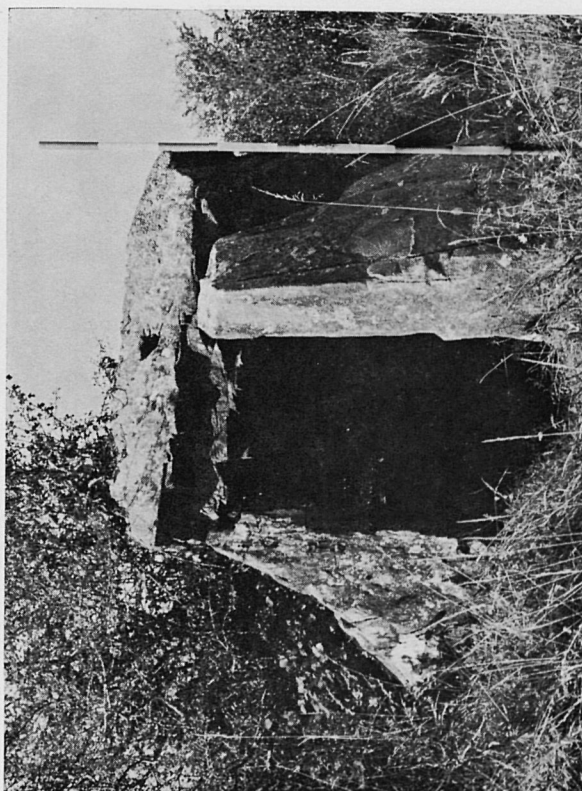
4. Aghadrumgowna or Calf Field (Cv. 25). West end of monument
from South-West. Pole stands at septal stone.



1. Banagher (Cv. 28). Chamber from North-West.



2. Drumeague (Cv. 29). South-West end of gallery from North-East.



3. Middletown (Cv. 30), from South.



4. Carrickclevan (Cv. 31), from East.



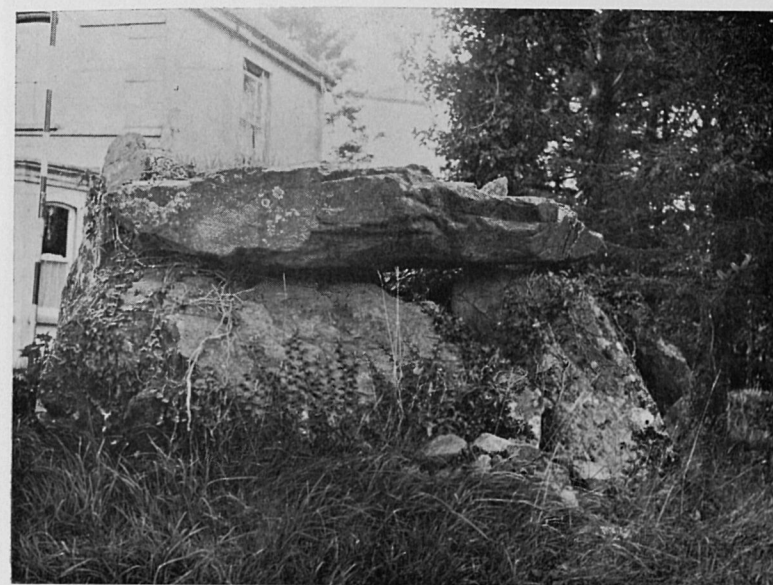
1. Aghawee (Cv. 33), from East.



2. Mullacastle (Cv. 34), from North-West.



3. Drumhawnagh (Cv. 32), from North.



4. Drumhawnagh (Cv. 32), from West.



1. Carrickacroy (Cv. 35), from West. The portal-stone, at left of picture, is 1.30 m. high.



3. Raffony (Cv. 38). West end of monument, from North-West.



2. Duffcastle (Cv. 36), from North.



4. Ballaghanea (Cv. 39), North-east

